



## VEZ Series

### Features

- 4  $\phi$  ~ 6.3  $\phi$ , 105°C, 1,000 hours assured
- Low ESR capacitors
- Designed for surface mounting on high density PC board
- RoHS Compliance

**NSCN** | WWW.NSCN.COM.CN

总机: 025-52188228 客服: 400-888-5058  
 技术: 025-84712971 邮箱: TECH@NSCN.COM.CN  
 南京南山半导体有限公司

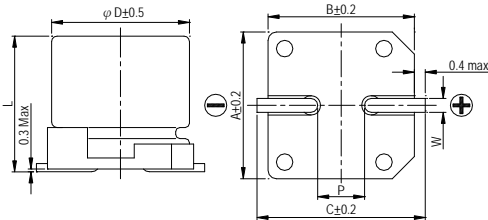


Marking color: Black

### Specifications

Items	Performance																								
Category Temperature Range	-55°C ~ +105°C																								
Capacitance Tolerance	±20% (at 120Hz, 20°C)																								
Leakage Current (at 20°C)	I = 0.01CV or 3 (μA) whichever is greater (after 2 minutes) Where, C = rated capacitance in μF V = rated DC working voltage in V																								
Dissipation Factor (Tanδ at 120Hz, 20°C)	<table border="1"> <thead> <tr> <th>Rated Voltage</th> <th>6.3</th> <th>10</th> <th>16</th> <th>25</th> <th>35</th> <th>50</th> </tr> </thead> <tbody> <tr> <td>Tanδ (max)</td> <td>0.28</td> <td>0.24</td> <td>0.20</td> <td>0.16</td> <td>0.14</td> <td>0.12</td> </tr> </tbody> </table>	Rated Voltage	6.3	10	16	25	35	50	Tanδ (max)	0.28	0.24	0.20	0.16	0.14	0.12										
Rated Voltage	6.3	10	16	25	35	50																			
Tanδ (max)	0.28	0.24	0.20	0.16	0.14	0.12																			
Low Temperature Characteristics (at 120Hz)	<p>Impedance ratio shall not exceed the values given in the table below.</p> <table border="1"> <thead> <tr> <th colspan="2">Rated Voltage</th> <th>6.3</th> <th>10</th> <th>16</th> <th>25</th> <th>35</th> <th>50</th> </tr> </thead> <tbody> <tr> <td>Impedance</td> <td>Z(-25°C)/Z(+20°C)</td> <td>4</td> <td>3</td> <td>2</td> <td>2</td> <td>2</td> <td>2</td> </tr> <tr> <td>Ratio</td> <td>Z(-55°C)/Z(+20°C)</td> <td>10</td> <td>7</td> <td>5</td> <td>3</td> <td>3</td> <td>3</td> </tr> </tbody> </table>	Rated Voltage		6.3	10	16	25	35	50	Impedance	Z(-25°C)/Z(+20°C)	4	3	2	2	2	2	Ratio	Z(-55°C)/Z(+20°C)	10	7	5	3	3	3
Rated Voltage		6.3	10	16	25	35	50																		
Impedance	Z(-25°C)/Z(+20°C)	4	3	2	2	2	2																		
Ratio	Z(-55°C)/Z(+20°C)	10	7	5	3	3	3																		
Endurance	<table border="1"> <thead> <tr> <th>Test Time</th> <th>1,000 Hrs</th> </tr> </thead> <tbody> <tr> <td>Capacitance Change</td> <td>Within ±25% of initial value</td> </tr> <tr> <td>Dissipation Factor</td> <td>Less than 200% of specified value</td> </tr> <tr> <td>Leakage Current</td> <td>Within specified value</td> </tr> </tbody> </table> <p>* The above Specifications shall be satisfied when the capacitors are restored to 20°C after the rated voltage applied for 1,000 hours at 105°C.</p>	Test Time	1,000 Hrs	Capacitance Change	Within ±25% of initial value	Dissipation Factor	Less than 200% of specified value	Leakage Current	Within specified value																
Test Time	1,000 Hrs																								
Capacitance Change	Within ±25% of initial value																								
Dissipation Factor	Less than 200% of specified value																								
Leakage Current	Within specified value																								
Shelf Life Test	Test time: 1,000 hours; other items are the same as those for the Endurance.																								
Ripple Current & Frequency Multipliers	<table border="1"> <thead> <tr> <th>Frequency(Hz)</th> <th>50, 60</th> <th>120</th> <th>1k</th> <th>10k up</th> </tr> </thead> <tbody> <tr> <td>Multiplier</td> <td>0.64</td> <td>0.8</td> <td>0.93</td> <td>1.0</td> </tr> </tbody> </table>	Frequency(Hz)	50, 60	120	1k	10k up	Multiplier	0.64	0.8	0.93	1.0														
Frequency(Hz)	50, 60	120	1k	10k up																					
Multiplier	0.64	0.8	0.93	1.0																					

### Diagram of Dimensions

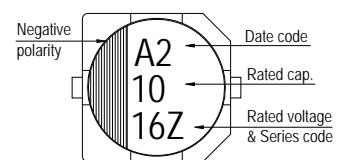


### Lead Spacing and Diameter

Unit: mm

$\phi$ D	L	A	B	C	W	P ± 0.2
4	5.3 ± 0.2	4.3	4.3	5.1	0.5 ~ 0.8	1.0
5	5.3 ± 0.2	5.3	5.3	5.9	0.5 ~ 0.8	1.5
6.3	5.3 ± 0.2	6.6	6.6	7.2	0.5 ~ 0.8	2.0
6.3	7.7 ± 0.3	6.6	6.6	7.2	0.5 ~ 0.8	2.0

### Marking



Dimension:  $\phi$  D × L (mm)

Ripple Current: mA/rms at 100k Hz, 105°C

Impedance: Ω/ at 100k Hz, 20°C

### Dimension & Permissible Ripple Current

μF	V <sub>DC</sub> Contents	6.3V (0J)			10V (1A)			16V (1C)			25V (1E)			35V (1V)			50V (1H)		
		$\phi$ D × L	Imp.	mA	$\phi$ D × L	Imp.	mA	$\phi$ D × L	Imp.	mA	$\phi$ D × L	Imp.	mA	$\phi$ D × L	Imp.	mA	$\phi$ D × L	Imp.	mA
1.0	010																4×5.3	5.0	30
2.2	2R2																4×5.3	5.0	30
3.3	3R3																4×5.3	5.0	30
4.7	4R7									4×5.3	3.20	65	4×5.3	3.20	65	5×5.3	3.0	50	
10	100				4×5.3	3.20	65	4×5.3	3.20	65	5×5.3	1.50	110	5×5.3	1.50	110	6.3×5.3	2.0	70
22	220	4×5.3	3.20	65	5×5.3	1.50	110	5×5.3	1.50	110	6.3×5.3	0.85	170	6.3×5.3	0.85	170	6.3×5.3	2.0	70
33	330	5×5.3	1.50	110	5×5.3	1.50	110	6.3×5.3	0.85	170	6.3×5.3	0.85	170	6.3×5.3	0.85	170	6.3×7.7	1.0	170
47	470	5×5.3	1.50	110	6.3×5.3	0.85	170	6.3×5.3	0.85	170	6.3×5.3	0.85	170	6.3×7.7	0.50	255			
100	101	6.3×5.3	0.85	170	6.3×5.3	0.85	170	6.3×5.3	0.85	170	6.3×7.7	0.50	255						
150	151	6.3×7.7	0.50	255	6.3×7.7	0.50	255	6.3×7.7	0.50	255									
220	221	6.3×7.7	0.50	255	6.3×7.7	0.50	255	6.3×7.7	0.50	255									